

Rider Race Pack

Hi, this pack provides you with all the information you need to compete in round 1 of the Victorian Enduro Series 2012 (VES).



Ballarat-Sebastopol MTB Club is proud to host the Round 1 of the Victorian Endurance Series. Being part of the Spokes Festival (see the last page of this document for more details) our race will be assisted by the Ballarat community groups and all profits from this event will be donated to the Ballarat Cancer Research Centre. We have received generous donations from major Ballarat organisations for a big prize money pool.

The course we're using is fast and flowing 10.5 km in Canadian forest that won't destroy your legs for the Otway Odyssey the following week.

Pax Hill Scout Camp will be the hub with a huge transition area and amenities. In the camp we've reserved the 'Pack Holiday Centre' which has 44 beds and a kitchen for both Friday night 10th and Saturday 11th. Why not stay in Ballarat and make a weekend of it?

Beds cost \$15 per night - Check out the bedroom configurations at the Pax Hill [website](#). If you are interested in accommodation at Pax Hill please email mtb@cyclingballarat.com.au for details.

Registration

All riders must attend the registration area prior to the event. Unless a day license has been purchased all riders must show their MTBA license to collect their race number.

6 Hour Riders

Saturday: 11th February 2012
Time: 8:30am – 9:30am
Venue: Main Tent in Marshalling Area

3 Hour Riders

Saturday: 11th February 2012
Time: 8:30am – 12:30pm
Venue: Main Tent in Marshalling Area

Please Note: there may be minor delays if riders for the 3 hour event present themselves after 10am, as the entry of 6 hour riders as they come past needs to take precedent, so allow enough time before the cut off time of 12:30pm.

Rider Categories

There are 11 categories for the full 6 hours and 3 for the 3 hours. There are classes for both men and women in solo, pairs or triples.

Class	Length	Gender	Comments
Solo	6 hours	Male	
Solo	6 hours	Male 40+	
Solo	6 hours	Female	
Pairs	6 hours	Male	
Pairs	6 hours	Female	
Pairs	6 hours	Mixed	
Triples	6 hours	Male	
Triples	6 hours	Female	
Triples	6 hours	Mixed	
Triples	6 hours	Juniors U19	Mixed gender and all 3 riders must be under 19
Triples	6 hours	Masters 40+	Mixed gender and all 3 riders must be over 40+
Solo	3 hours	Male	
Solo	3 hours	Male 40+	
Solo	3 hours	Female	

Race Venue

The race will start at Pax Hill Activity Centre (previously known as Pax Hill Scout Camp), for information see their website <http://paxhillactivitycentre.com.au/>

450 Spencer Street,
Ballarat VIC 3350

(see 'Driving Instructions' section to see where)

Race Briefing

At 9:45 (sharp) all 6 hour riders will be asked to gather in the starting area, where they will be addressed and be given the race briefing which will explain some of the unique features of the race. For the 3 hour riders this will occur at 12:45pm.

Race Start

All 6 hour categories will start at the one time, and ask that riders 'self seed'. So the faster riders will be up the front. To spread the field out the race will start at a bottom of a hill away from the finish line, this will allow riders a chance to over take and work out their positions before the single track starts and over taking becomes more difficult.

All riders in the 3 hours categories will be released (on mass) at 1:00pm, at the same start point as the 6 hour riders but they go through the lower section of Pax Hill loop and then out the gate.

We ask that all riders be considerate to others both slower and faster.

Driving Instructions (450 Spencer St, Ballarat, Victoria)



If you travelling from Melbourne, take the first exit to Ballarat (Victoria St)

- After approximately 2km along Victoria St, at the bottom of the hill (at the first set of lights) turn left onto Fussell St
- Drive straight through roundabout, when you hit Eureka St
- Drive straight through at York St
- Drive straight through at Wilson St
- Turn left onto Spencer St
- Pax Hill is just after the Fussell St intersection. If the road turns into dirt you have gone too far.

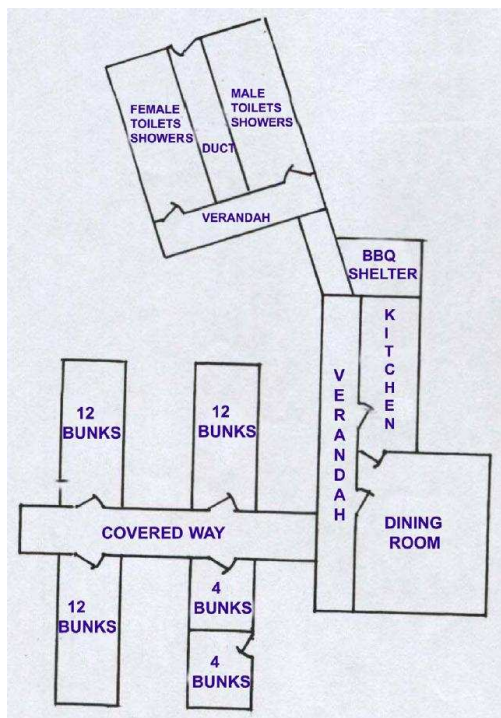
Event Parking

Free parking is available outside of Pax Hill's land, along Fussell and Spencer St. Fussell St is probably the best location to park. If you are bringing equipment that you don't want to carry for miles, you will be able to drive into Pax Hill and drop everything off and then go and find a park, the red area in the following image is the drop of area.

best thing is we are only charging \$15 per bed per night. The accommodation unit also has a kitchen and recreation room. You'll need to bring your own bedding.

You can stay Friday night, Saturday night or both. It's a much better option than racing for 6 hours then driving back home when you're tired.

You can see on the image in the previous section where the accommodation is situated (the **orange** squares).



To see a map of the accommodation unit click here. We've booked the Park Holiday Centre:

<http://paxhillactivitycentre.com.au/accommodation>

We're taking bookings so contact: mtb@cyclingballarat.com.au before all the beds are taken.

Transition Station

There will be a transition/feed station located as shown by the **blue** section on the village map. Riders will be able to place their own race food and drink in this area prior to the event start.

Rider Swap

For riders in teams, the swapping of riders should **not** be done in the **blue** area because the rider coming in has not been recorded until after the finish line. So instead all swaps should be done in the **purple** area (after the finish line). This procedure should give the new rider a chance to see when their team mate is about to come in and time enough to make their way to the **purple** area.

Medical Aid

The event will be manned by professional paramedics wearing fluoro orange vests. We ask that the first person who comes across an injured rider stops to help, and the second person notifies the next race marshal who will contact the paramedics. We recommend all riders are members of the Ambulance Service as in the event an emergency the paramedics will call for an ambulance.

Facilities

We have the use of the toilets at Pax Hill.

Drinking water containers will be available to fill up your drink bottles.

There will be coffee available from around 9am, for anyone wanting a caffeine hit.

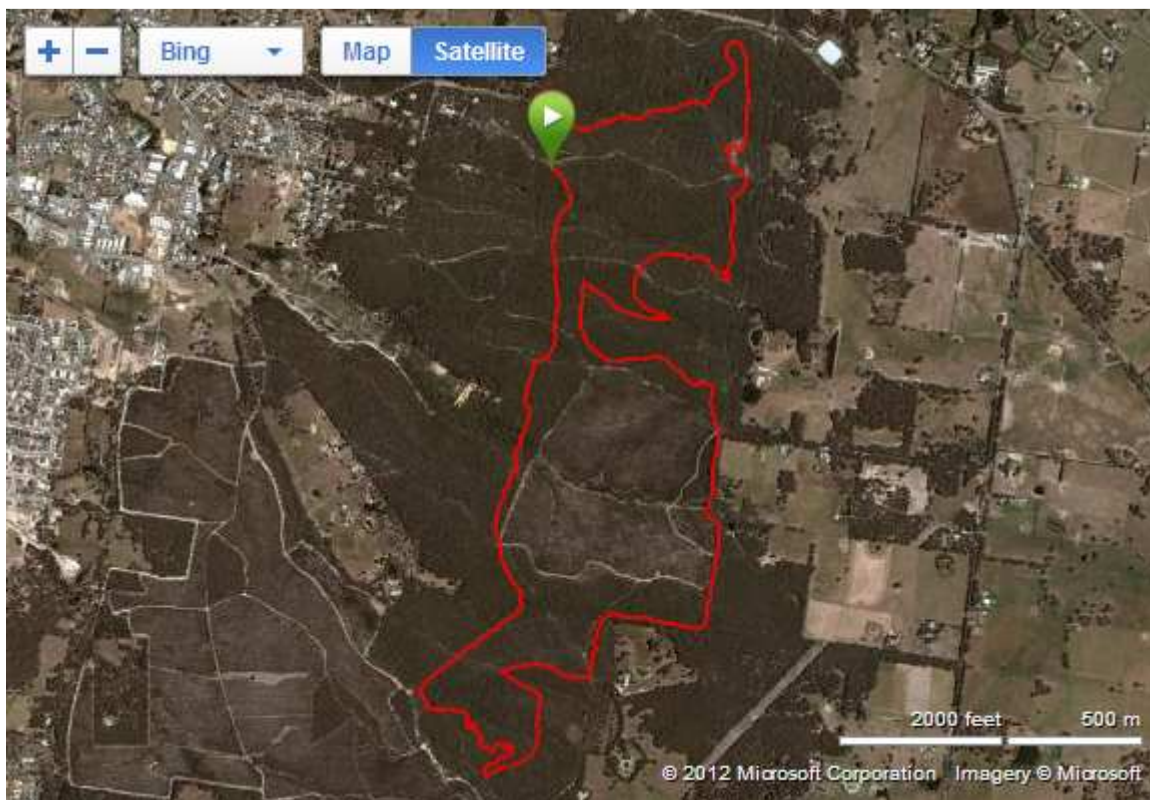
At the end of the race there will be a selection of hot and cold food and drink.

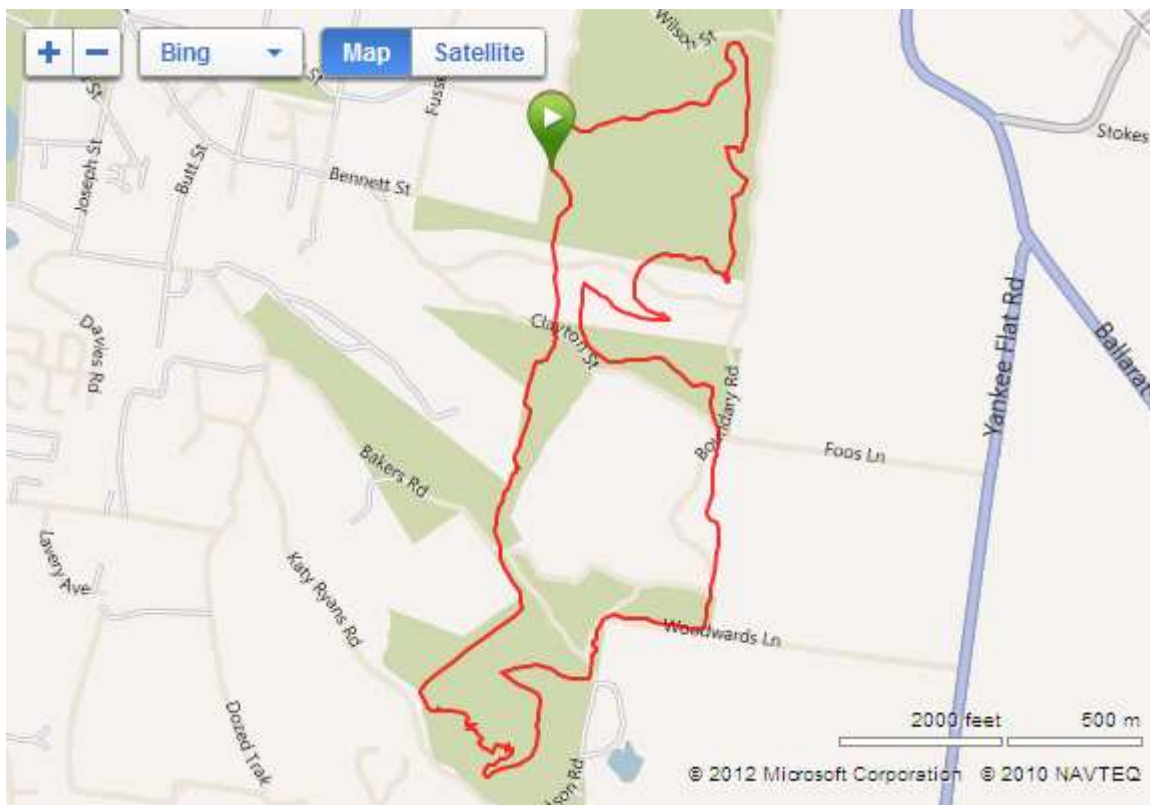
The Course

We will start the race at the bottom of a hill near Pax Hill which should allow people to settle into their groove before hit the first bit of single track. Initially you will be heading South on a mixture of single and dual tracks that meanders for nearly a km until you cross a road and enjoy a short but fun bit of single track. Crossing another road you climb along a tricky fire road that takes a turn to the left and picks up a short and sharp bit of single track. Once on top another flying fire track takes you down through a gully where another short and steep fire road climb awaits.

Things get easy at the top of this track where some rolling single track/fire trail takes you the southern sector of the track. After some fast and flat fire road things take a turn up and a long and steady climb awaits. Once you have busted this climb a fun bit of single track and fire road will take you downhill give you a chance to get your breath back. Again a right-hand turn up some single track present another long but steady climb until you cross a road at the top and get to enjoy some tight downhill single track through some grass trees. At the bottom another fairly flat fire trail gives you a chance to take on some fuel followed by a fast downhill track that takes you through a steep gully and onto another short but sharp climb. This fire trail continues uphill and you meet up with the sweet bit of downhill single track that will give you a big smile then a quick climb and your back on another fast flowing downhill that you will surely enjoy.

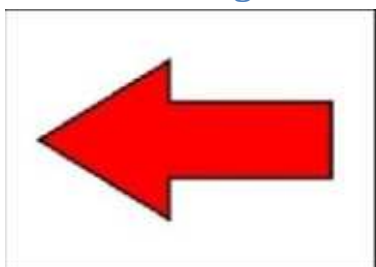
After a bit of fun then you will be climbing back up following some fire trails where you hit some single track for a run back to the start finish line.... but before you get there you will hit 'Big Red' the now infamous steep fire road that takes you to the top of a big rocky hill. Once you have ridden (or walked) up the beast you will get the chance to fly down and go straight into some fast single track to the most northern part of the track. After a little climb you get the chance to fly down some more single track onto a fire road that takes you west with a chance to use your big ring. Rounding a tight corner a short fire road climb to the transition area.





Course as shown in Google maps

Course Markings



The course will be marked with white cards, A5 in size with red arrows on them, they will indicate any change of direction or when there is an intersection with more than one choice. In the majority of cases the arrows will be mounted at ground level. Red/white bunting will also be in use.

Course Practice and Inspection

Officially the course cannot be opened until Saturday 11th February (according to the permit), so it will be fully marked by 9:00am on the morning of the race. Anyone wanting to familiarise before this should download the GPS course from the following URL:

<http://connect.garmin.com/activity/144612782>

Tyre Choice

Not sure what tyres to ride with? The course has a bit of everything: clay, mud, loose stone, sand, rocks and hard packed dirt. For everyone that did Round1 of Interwinter last year it is the same course, however we would hope it is a lot drier now. As of 14th of January the course has bedded in nicely and is really enjoyable. So we would recommend a good all-round tyre.

What to Carry on the Course

Every rider should have at least 1 spare tube, a mini pump or CO2 canisters (at least two), a multi tool that has a chain breaker and a quick link for your chain. A spare derailleur hanger (to suit your bike) is highly recommended, as there is always the chance of your derailleur hanger bending or breaking.

Presentations

At the completion of the race (after the last rider has crossed the line, approx 4:30pm to 4:45pm) a draft version of the results will go on display for 15 minutes to give riders the chance to check for errors. After this time and any reported corrections have been made a presentation ceremony will take place to award the winners. So stay around to show your support, what's more you may have been selected for a spot prize which you wont be able to collect if you are not there!

Spokes Festival

This event along with 'State Madison Track Championship', 'Challenge Tour for Cancer' and the 'Cycle Classic' are all part of the 'Ballarat Spokes Festival', a weekend full of cycling events raising money for the Ballarat Cancer Research Centre. See website for more details: <http://spokesfestival.com.au/>

THE INAUGURAL BALLARAT SPOKES FESTIVAL IS AN
INTEGRATED CYCLING EXPERIENCE,
CATERING FOR ALL TYPES OF
BIKING ENTHUSIASTS

In 2012 the Ballarat Spokes Cycle Classic (formally known as the Come to Life Ballarat Cycle Classic) will enter its fifth year. On the back of the tremendous success of last years event, we are expanding the event to a weekend festival to include BMX, downhill, Endurance and Madison cycling events which will make up the inaugural

BALLARAT SPOKES FESTIVAL

The 2012 Ballarat Spokes Festival will be held over the weekend of Saturday 11th and Sunday 12th February 2012.

Spokes Saturday events include BMX, Mountain Bike, Madison Track and a four day return cycle tour from Ballarat to Bright. The Mountain Bike and Madison Track are both state rounds with the BMX attracting some top Australian pro (elite) riders, so the competition is expected to be fierce!

The Spokes Festival all leads up to Sunday with the running of the Ballarat Spokes Cycle Classic being held. This is your opportunity to ride the Australian National Championship Course at Mt Buninyong, providing cyclists across all levels the opportunity to pit themselves against the same course undertaken by 2011 Tour de France champion Cadel Evans.

The Ballarat Spokes Festival will help unlock the riddle of cancer by donating all profits from these events to the Ballarat Cancer Research Centre.

The festival aims to encourage participants of all ages, all biking backgrounds and all fitness levels to get out and celebrate all things cycling. It provides a springboard for the event to grow in years to come.

Be sure to follow us on Facebook to keep upto date with all the latest news.

EVENTS

- [BALLARAT SPOKES CYCLE CLASSIC](#) >
- [BALLARAT SPOKES MOUNTAIN BIKE STATE ENDURO](#) >
- [BALLARAT SPOKES STATE MADISON TRACK CHAMPIONSHIP](#) >
- [BALLARAT SPOKES BMX PRO-AM](#) >
- [BALLARAT SPOKES CHALLENGE TOUR FOR CANCER](#) >

SUPPORT

- [BALLARAT CANCER RESEARCH CENTRE](#) >

